

NC STATE
UNIVERSITY

VISITOR GUIDE



Great Locations Offering Comfort, Convenience, and Affordability



Apartments for 2023!

MATTA Management, LLC



Parkwood Village



- Two Wolfline Bus Stops On-site
- Outdoor Pool and Club House
- Energy Savings Windows
- 1 Mile from NC State
- Upgraded Apartments
- (Card Operated) On-site Laundry Facilities
- 24-hour Emergency Maintenance
- Energy Efficient Central Heating & Air
- Wall-to-Wall Carpeting
- 6, 12 Month Lease Available
- Water, Sewer, & Trash Included
- On-site Security Patrol: 6pm–6am
- Permit Parking

Gorman Parkwood



- Washer/Dryer in Each Unit
- Walking Distance to Retail & Shopping
- Flexible Lease Options
- 24-hour Maintenance Guarantee
- 30-day Satisfaction Guarantee
- Central Heating & Air
- Award-winning, Friendly Management
- Built-in Microwave
- Two Wolfline Bus Stops
- 6, 12 Month Lease Available
- Water, Sewer, Trash, & Electricity Included
- Cable & High-Speed Internet Ready
- On-site Security Patrol: 6pm–6am
- Permit Parking

Gorman Place



- Washer/Dryer Connection
- Walking Distance to Retail & Shopping
- Flexible Lease Options
- 24-hour Maintenance Guarantee
- 30-day Satisfaction Guarantee
- Central Heating & Air
- Ample Closet & Storage Space
- Award-winning, Friendly Management
- Built-in Microwave, Dishwasher
- Two Wolfline Bus Stops
- 6, 12 Month Lease Available
- Water, Sewer, & Trash Included
- Outside Storage and Balcony
- On-site Security Patrol: 6pm–6am
- Permit Parking

Call Us for Our Monthly Rent Specials!
Phone: 919.832.7611
Fax: 919.834.9847

2729 A Conifer Drive
Raleigh, NC 27606
Email: manager@parkwoodvillageapts.com

VISITOR GUIDE

Welcome to NC State

2 Plan Your Visit

- 3 Talley Student Union
- 3 Visitor Parking
- 3 Wolfline Bus System
- 3 Hillsborough Street
- 3 Dining Options
- 3 Take a Tour
- 4 NC State Overview
- 6 History
- 8 Chancellor Woodson

Academics

- 12 Undergraduate Admissions
- 14 The Graduate School
- 16 Pre-College Programs
- 17 Scholarships
- 17 Goodnight Scholars
- 17 Park Scholarship

Our Campus

- 18 Campus Visits
- 19 Self-Guided Tour
- 24 Main Campus
- 24 Talley Student Union

- 25 Reynolds Coliseum
- 25 Memorial Belltower at Henry Square
- 25 D. H. Hill Jr. Library
- 26 Centennial Campus
- 26 James B. Hunt Jr. Library
- 27 Golf & Dine
- 27 Park Alumni Center
- 28 Centennial Biomedical Campus
- 28 The Vet School
- 29 JC Raulston Arboretum

Life at NC State

- 32 Athletics
- 33 Carter-Finley Stadium and PNC Arena
- 34 Events
- 34 Packapalooza
- 35 Open House
- 35 Krispy Kreme Challenge
- 36 Art2Wear

Connect with NC State

- 38 Campus Directory
- 39 Social Media



Meals | Catering | Cakes

Visit meals2GO.com
or download our app and
order today for carryout
or curbside pickup.



984-960-5600 • RALEIGH

1200 Wake Towne Drive,
Raleigh, NC 27609-7495



Hampton Inn & Suites

Raleigh/Cary

Please give us a call for the exclusive
NC State University Rate! Go Pack!



111 Hamptons Woods Ln.
Raleigh, NC, 27607
(919) 233-1789



ONLY 6 MILES
FROM NC STATE!

NC State University promotes equal opportunity and prohibits discrimination and harassment based upon one's age, color, disability, gender identity, genetic information, national origin, race, religion, sex (including pregnancy), sexual orientation and veteran status.

15,000 copies of this public document were printed at a cost of 33¢ per copy.

WELCOME TO NC STATE

At NC State,
we unite
thought and
action to create
prosperity
for all.

**Discover
how we
Think and Do.**

When you come to NC State, you're not just here to go to class. Our campus community and amenities will bring you into the heart of the Wolfpack. NC State is a leading research university that readies students for lifelong success. Wherever you're headed, we can help you get there.

At NC State, we create prosperity for North Carolina and the nation. We began as a land-grant institution grounded in agriculture and engineering. Today, we're a preeminent research enterprise that excels across disciplines.

Our more than 36,000 undergraduate and graduate students learn by doing. They pursue original research and start new companies. They forge connections with top employers and serve communities locally and globally. Through it all, they enjoy an outstanding return on investment.

Get a glimpse of your future home at **NC State**.



Plan Your Visit

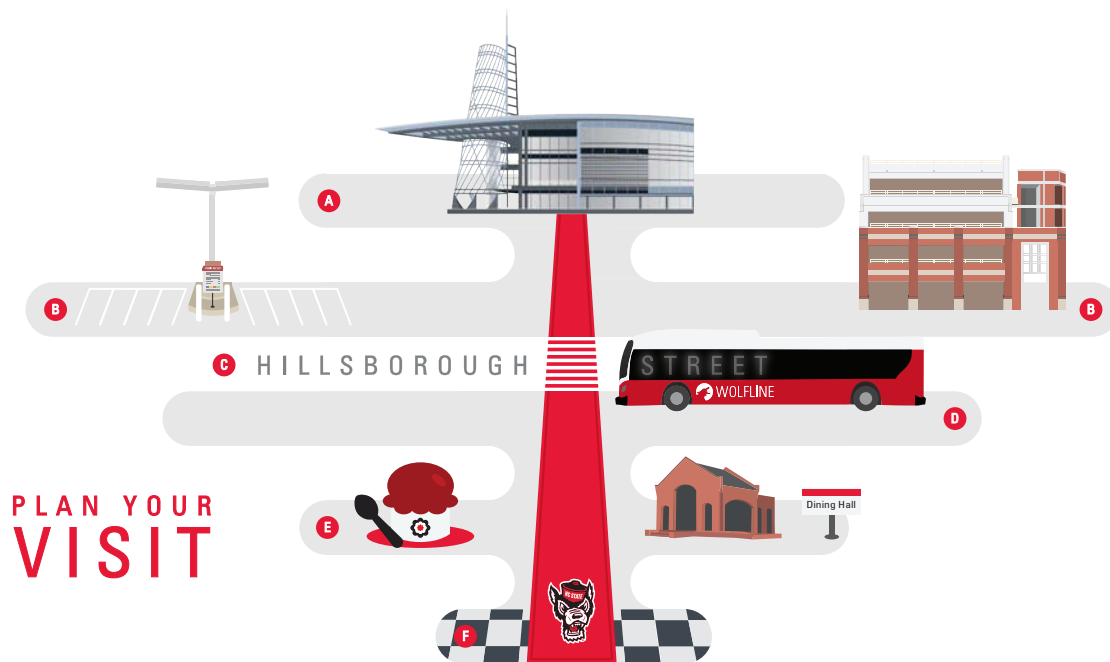
**We want to
help you make
the most of
your visit.**

As a campus with over 36,000 students, we realize each student has different interests. We want to help you make the most of your visit by providing pathways to explore what specifically interests you.

We invite our future students and families to take an up-close look at our cutting-edge facilities, meet our world-leading faculty and discover the wealth of educational and extracurricular opportunities that await you at NC State.

Despite our size and scope, we retain a close-knit college-town feel. Students from all over the world choose to make this place their home, finding their own community of thinkers and doers within the wider Wolfpack.

We can't wait to meet you.



PLAN YOUR VISIT

Talley Student Union **A**

Stop by Campus Visits in Talley Student Union for information on attending an information session and NC State campus tour.

You can see the dates and times of our campus tours at admissions.ncsu.edu/visit.

If you want to learn more about NC State's undergraduate programs and admissions process, admissions officers are available to speak with you in the Campus Visits office. Walk-ins are welcome — no appointment is required.

Visitor Parking **B**

Payment is required for on-campus parking

Monday - Friday,

7 a.m. - 5 p.m.

go.ncsu.edu/visitorparking

Main Campus Parking Locations

› Coliseum Parking Deck

201 Jensen Drive

Enter the visitor parking section through the Cates Avenue pay lot side.

› Dan Allen Parking Deck

110 Dan Allen Drive

Enter on the lower level for the visitor pay lot parking.

Centennial Campus Parking Locations

› Partners Way Parking Deck

851 Partners Way

› Poulton Pay Lot

1070 Partners Way

Wolfline Bus System **C**

The Wolfline is NC State's bus service that operates each day classes are in session and transports you between all three of our campuses. No fare or ID is required. Download the Transloc Rider app to find a Wolfline stop near you and hop on!

go.ncsu.edu/wolfline



Hillsborough Street **D**

Students enjoy the variety of dining options and studying at a few of the local restaurants and coffee shops right on the edge of campus. Take a walk over to Hillsborough Street to grab a bite to eat or a quick cup of coffee. Metered street parking is available on Hillsborough Street during the day and is free after 8 p.m.

Dining Options **E**

NC State offers a variety of fresh, healthy and delicious dining options to satisfy everyone's taste buds. Dining locations are available across main and centennial campuses. See what's open and on the menu at dining.ncsu.edu.

Take a Tour **F**

Our university spans across three campuses that are minutes apart - Main Campus, Centennial Campus and Centennial Biomedical Campus.

Explore Main Campus using the self-guided tour on pages 19 to 22.



NC State Overview

**Welcome to
NC State.
Come see the
place where
you'll Think
and Do.**

NC State is a leading public university in one of the fastest-growing cities in America. We are known for our leadership in education and research and are globally recognized for science, technology, engineering and mathematics.

As a land-grant institution, NC State is committed to playing an active and vital role in improving the quality of life for the citizens of North Carolina, the nation and the world. We support our state's key industries, offering majors in natural resources, textiles and agriculture. Each year, NC State adds billions of dollars to the statewide economy through partnerships with government, industry and nonprofits.

36,700

**Students at
NC State**

26,254

Undergraduate Students

10,446

Graduate Students

1,488

Non-degree Seeking
Students

211

Agricultural Institute
Students

477

Veterinary Medicine
Students

29,096

North Carolina
Students



3,522

Out-of-state Students



3,862

International Students



100

North Carolina Counties
Represented

55

States and Territories
Represented

110

Countries
Represented

300+

**Undergraduate and Graduate
Degree Programs Offered**

TOP 1% TOP 30

of Universities
Worldwide

Center for World University
Rankings (2022)

Among Public
Universities in the Nation

U.S. News & World Report (2022)

#4

College of Veterinary
Medicine in the U.S.

U.S. News & World Report (2022)

#3

Best College City
in America (Raleigh)

WalletHub (2022)

#2

Best Value Public
Institution in North Carolina

Princeton Review (2022)

#1

Best Entrepreneurship
Program in the Southeast

Princeton Review (2022)



History

NC State has developed into a vital educational and economic resource.

Founded in 1887, NC State — then known as the North Carolina College of Agriculture and Mechanic Arts— began classes in the fall of 1889 with 72 students, six faculty and one building. Today, the university has over 36,000 students, 9,000 faculty and staff and more than 700 buildings.

In the early 1900s, two federal programs sparked a new era in extension and outreach work at the college. An agreement with the U.S. Department of Agriculture in 1909 led to what is now known as the 4-H program. The passage of the Smith-Lever Act in 1914 enabled land-grant colleges to establish state, county and local extension programs to further support their existing demonstration work, leading North Carolina to establish the Cooperative Agricultural Extension Service at State College.



Historic marker on
Hillsborough Street

Although the term “State College” had been in use for years, the broadening of the school’s teaching, research and extension activities led the Board of Trustees to officially adopt the name. By the 1920s, State College was beginning to grow beyond its original agricultural and mechanical focus, adding schools of engineering, science and business, textiles, education and a graduate school.

Despite the difficulties of the Great Depression as well as World War II, State College made contributions to the war effort by hosting a number of military detachments and training exercises, and refitting the work of several departments and programs to military and defense purposes. The campus experienced unparalleled growth during the postwar years as the G.I. Bill brought thousands of former servicemen to campus.

In the following decades, the college continued to expand its curricula, creating schools of design, forestry, physical science and mathematics, and humanities and social sciences. During these years of growth, the name was changed again—this time to North Carolina State University at Raleigh.

The university celebrated its 100th anniversary in 1987, which also saw the creation of Centennial Campus. Centennial brings together university and corporate leaders to engage in teaching, research and economic development.

Known as the “People’s University,” NC State has developed into a vital educational and economic resource. A wealth of university outreach and extension programs provide services and education to all sectors of the state’s economy and its citizens. Consistently ranked a national best value and among the nation’s top 100 public universities, NC State is a preeminent research institution, attracting top faculty and students from around the world. Together with our public and private partners, we create economic, societal and intellectual prosperity.



Chancellor Woodson



**Our alumni,
donors and
friends are
proud of this
university and
excited about
its future —
and so am I.”**

Dr. Randy Woodson is NC State's 14th chancellor serving the largest university in North Carolina with over 36,000 students. During his tenure, the university has added billions of dollars a year to the North Carolina economy. In 2019, he was named a “CEO of the Year” by the *Triangle Business Journal*. Under his leadership, the university created and implemented **The Pathway to the Future** strategic plan that has elevated NC State's recognition among the nation's top public research universities.

Dr. Randy Woodson
Chancellor



Aerial view of NC State's
Centennial Campus

NC State has become a lead university for two National Science Foundation Engineering Research Centers, one Manufacturing USA institute and partner on six others, and expanded to more than 75 industry and government partnerships on its nationally recognized Centennial Campus. NC State has also garnered national and international recognition for its faculty and student scholarship.

Under Chancellor Woodson's leadership, NC State has become a preeminent research enterprise known for solving real-world challenges – a true Think and Do university. Woodson's strategic vision has enabled the university to advance in areas of student success, innovative research and collaborative partnerships. This has resulted in students ready to solve real-world challenges, public-private partnerships that transform ideas into solutions, and a creative, engaging center of learning and exploration for all.



Dr. Randy Woodson



ACADEMICS

**NC State
is home to
12 colleges
covering
all major
academic
disciplines.**

An NC State education creates more than just a college graduate. We meld theory and practice to produce tomorrow's innovators and leaders.

With 12 colleges representing all major academic disciplines and more than 36,000 students and 2,400 faculty, NC State is the largest university in North Carolina. We are a preeminent research enterprise where undergraduate and graduate students learn from award-winning faculty.

While our traditional strengths lie in engineering and agriculture, we're also a powerhouse in humanities and social sciences, plant and animal life sciences, management, design, textiles, education, natural resources, veterinary medicine and the physical, chemical, mathematical, statistical, biological and earth-system sciences.



Undergraduate Admissions

Choose your major and hit the ground running.

When you apply to NC State, you'll be asked to choose your preference for a major (or two). We provide our students with everything they need to hit the ground running in the real world. On top of world-class academics, you can expect your time here to be packed with rich experiences that deepen your understanding and strengthen your resume, from co-ops or internships to study abroad and undergraduate research.



Finding Your Best-Fit Major

The Exploratory Studies program is designed to help students explore their options and identify a major that best fits their interest.

Advisors assist students throughout their first year with major selection, career awareness, academic success and personal enrichment to prepare them for success.

How to Apply

Learn about the information we consider in admissions decisions, and see our application requirements at admissions.ncsu.edu/apply.

Submit your completed application through:

> The Common Application
Commonapp.org

> The Coalition Application
Mycoalition.org

Top 10 Undergraduate Programs



Animal Science



Criminology



Engineering First Year



Exploratory Studies



Fashion and Textile Management



Life Sciences First Year



Management First Year



Political Science



Psychology



Sport Management

Fall Entry First-Year Applicants

Early Action

Deadline: **November 1**

Notification Date: **January 30**

Regular Decision

Deadline: **January 15**

Notification Date: **March 30**

Fall Entry Transfer Applicants

Deadline: **February 15**

Notification Date: **Beginning April 15**

Spring Entry (First Year and Transfer)*

Deadline: **October 1**

Notification Date: **Beginning November 15**

**Please note that certain programs do not accept applications for spring entry.*

Studio-Based Majors

Studio-based majors are fall entry only.

First-year and transfer applicants must submit completed applications including a portfolio and an additional essay by **November 1**.

Sign up to receive information about NC State admissions and events at go.ncsu.edu/interest-form.



The Graduate School

NC State's Graduate School prepares more than 10,000 students to solve the world's biggest problems through its 160 master's and 62 doctoral programs.

When you pursue a graduate degree at NC State, you aren't just preparing for the real world — you're shaping it. Our master's and doctoral students work alongside our faculty to solve the world's biggest problems, including everything from finding economically and environmentally sustainable energy sources to improving human health and creating prosperity.

Your work isn't limited to NC State's campuses — you'll collaborate with government, industry, business and nonprofit partners at work around the globe. NC State's Graduate School partners with more than 60 partner organizations, including Cabinet-level federal departments, energy leader ABB, research giant LexisNexis and clothing manufacturer Hanesbrands.

View the Graduate School's website at grad.ncsu.edu/admissions/deadlines to learn more about the programs offered, important deadlines and admissions criteria.

Top 10 Graduate Programs



Business Administration



Chemistry

#7

Online Graduate Engineering Program Nationally

U.S. News & World Report (2022)

#4

Veterinary Medicine Program Nationally

U.S. News & World Report (2022)



Computer Engineering



Computer Science (MR)

#10

Among Best Education Schools

U.S. News & World Report (2022)



Computer Science (PhD)



Educational Leadership



Electrical Engineering (MS)



Electrical Engineering (PhD)



Physiology



Veterinary Medicine

Application Deadlines

Deadlines vary depending on the program you are applying for. Applications and all supporting documents must be received on or before the priority deadline or the program deadline, whichever is earlier.

Visit grad.ncsu.edu/admissions/deadlines to learn more about application deadlines for our graduate programs



A College of Veterinary Medicine student at the Equine Center



A student researcher at the Comparative Medicine Institute Lab



An agriculture student looks over loblolly pine seedlings



Pre-College Programs

Our pre-college programs are an initiative geared towards North Carolina's historically underrepresented student populations. Our three summer programs prepare rising high school juniors and seniors for the college application process and university experience.

For questions, or to find a program you are interested in, visit go.ncsu.edu/precollege.



Scholarships



Goodnight Scholarships

The Goodnight Scholarships program, funded by a gift from Dr. Jim and Ann Goodnight, is a comprehensive student development program designed to develop scholars into leaders within the STEM and STEM education fields.

The scholarship is focused on low and middle-income families from North Carolina and is limited to students studying STEM or STEM education related majors. The value of the scholarship is \$22,000 and is renewable for up to four years for first-year students and three years for transfer students. In addition to the scholarship, Goodnight Scholars have access to an assortment of developmental programming focused on their professional and personal growth.

Learn more at goodnight.ncsu.edu.



Park Scholarships

The Park Scholarships program is a four-year scholarship awarded on the basis of outstanding accomplishments and potential in scholarship, leadership, service and character. Established in 1996, the program was named for the late Roy H. Park '31, an NC State alumnus who created the charitable Park Foundation, dedicated to education, media and the environment. U.S. residents or U.S. permanent resident aliens are eligible to be nominated their senior year of high school. It is valued at up to \$116,000 for in-state residents and up to \$213,000 for out-of-state residents. In addition to the scholarship, students receive support through mentoring, seminars and professional development.

Learn more at park.ncsu.edu.

CAMPUS VISITS

Experience the place where you'll Think and Do.

You'll find lots of ways to fill a day on NC State's campus — whether you're scouting out campus landmarks, doing a deep dive on majors and programs or exploring the surrounding area.

Information Sessions and Tours

Prospective first-year and transfer students who have not yet applied to NC State are invited to attend an on-campus admissions information session and student-led campus tour. Campus visits are offered Monday through Friday starting at Talley Student Union. You can expect to be on Main Campus for approximately two hours.



High School Group Visits

We welcome prospective high school student groups to attend an on-campus admissions information session followed by a student-led campus tour.

For more information about scheduling a group tour, please email campusvisits@ncsu.edu.

Learn more and plan your visit at go.ncsu.edu/scheduleavisit.

MAIN CAMPUS SELF-GUIDED TOUR



Welcome to **NC State's Main Campus**

Enjoy a personalized on-campus visit experience through this self-guided tour.

Get Started

STEP1

PARK

Coliseum Parking Deck
201 Jensen Dr.
Raleigh, NC 27606

- PAY LOT (LOWER LEVEL)
- ENTRANCE ON CATES AVE

STEP2

NAVIGATE CAMPUS



STEP3

SCAN QR CODE



STEP4

WATCH VIDEO



VISITOR PARKING

Coliseum Parking Deck
Pay Lot (Lower Level) 201 Jensen Dr. Raleigh, NC 27606

REYNOLDS COLISEUM

Women's basketball, wrestling, gymnastics, volleyball,
ROTC offices and NC State Athletic Hall of Fame

TALLEY STUDENT UNION

Wolfpack Outfitter (bookstore), Campus Community
Centers, dining

WELLNESS AND RECREATION CENTER

Carmichael Complex, Climbing Center, Intramural Sports,
Aquatics Center

PRICE MUSIC CENTER

Department of Music, practice studios, marching band

HOLMES HALL

Exploratory Studies advising, Study Abroad, Disability
Resource Office

CAMPUS HEALTH

Student Health Services, Counseling Center, dental
services, pharmacy physical therapy

WITHERSPOON STUDENT CENTER

African American Cultural Center, student media offices,
campus cinema, Military and Veteran Services

NC STATE DINING

Three all-you-can-eat dining halls, food courts,
restaurants and cafes

UNIVERSITY HOUSING OWEN/TUCKER

20 residence halls, 15 living and learning villages
(First-year students are required to live on campus)

FREE EXPRESSION TUNNEL

Pedestrian tunnel, designated free expression canvas

THE BRICKYARD

Ag Awareness Week, Shack-A-Thon, Farmers Market

SCOTT COURTYARD

Poole College of Management, Science Teaching Labs

HILL LIBRARY

Main Campus library, Academic Success Center,
Makerspace

HILLSBOROUGH STREET

Local restaurants and shopping

COURT OF NORTH CAROLINA

Grass courtyard, outdoor classrooms, humanities,
education and design

MEMORIAL BELLTOWER AT HENRY SQUARE

Memorial to NC State students who gave their lives
to serve our country in World War I

SAS HALL

Mathematics and Statistics Departments

UNIVERSITY HOUSING HONORS VILLAGE

Berry, Becton and Bagwell Residence Halls

Start Here

WELCOME TO NC STATE



CHECK-IN



1 VISITOR PARKING E4



Coliseum Parking Deck
201 Jensen Dr.
Raleigh, NC 27606
P PAY LOT (LOWER LEVEL)
ENTRANCE ON CATES AVE

2 REYNOLDS COLISEUM D3



SELF-GUIDED TOUR LEGEND

- 5, 6, 18 | ACADEMICS
- 11, 12, 13, 16, 17 | LANDMARKS
- 9 | NC STATE DINING
- 7, 14 | RESOURCES
- 2, 3, 4, 8, 15 | STUDENT LIFE
- 10, 19 | UNIVERSITY HOUSING
- 1 | VISITOR PARKING

THANK YOU FOR VISITING NC STATE

DISCOVER NC STATE
discover.admissions.ncsu.edu



VIRTUAL TOUR
visit.ncsu.edu



19 UNIVERSITY HOUSING E3
HONORS VILLAGE



18 SAS HALL E2



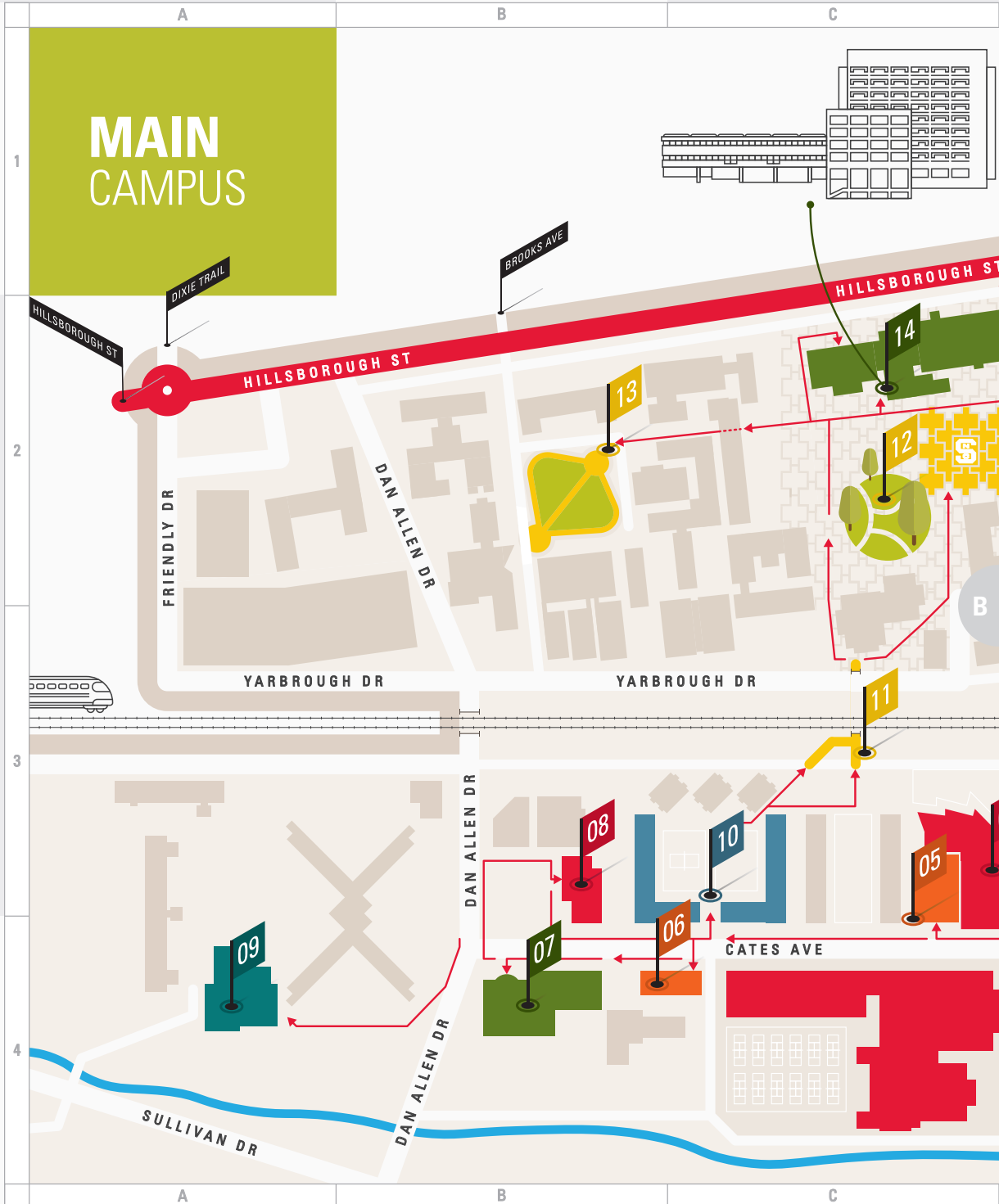
17 MEMORIAL BELLTOWER AT HENRY SQUARE F1



16 COURT OF NORTH CAROLINA E2



15 HILLSBOROUGH STREET D1



3 | TALLEY STUDENT UNION ^{D3}



D

4 | WELLNESS AND RECREATION CENTER ^{D4}



E

5 | PRICE MUSIC CENTER ^{C3}



F

6 | HOLMES HALL ^{C4}



7 | CAMPUS HEALTH ^{B4}



1

8 | WITHERSPOON STUDENT CENTER ^{B3}



2

9 | NC STATE DINING ^{A4}

FOUNTAIN DINING HALL



3

10 | UNIVERSITY HOUSING ^{C3}

OWEN/TUCKER



4

14 | HILL LIBRARY ^{C2}



D

13 | SCOTT COURTYARD ^{B2}



E

12 | THE BRICKYARD ^{C2}



F

11 | FREE EXPRESSION TUNNEL ^{C3}





DISCOVER NC STATE UNIVERSITY

As the largest four-year institution in North Carolina, we've provided some highlights for you to explore on our campus. We're excited to show you our home.

Explore NC State's Campuses

NC State spans three campuses, all located in close proximity. While **Main Campus** is the center of the student experience, **Centennial Campus** showcases ultramodern facilities and is a hub for student entrepreneurship and **Centennial Biomedical Campus** hosts our nationally-ranked veterinary medicine program.

MAIN CAMPUS

Student life thrives here. Students spend the majority of their time on Main Campus which features a variety of residence halls, dining halls and classroom buildings. By touring through main campus, you'll walk the same path the first class of NC State did starting in 1887. Tradition began on this campus — from the Memorial Belltower to Reynolds Coliseum.

CENTENNIAL CAMPUS

NC State's Centennial Campus, known as our research campus, is home to the College of Engineering and Wilson College of Textiles. Hop on the Wolfline, NC State's bus system, and you'll be on Centennial Campus in just a few minutes! You'll also find local businesses housed on this campus with plenty of opportunities for internships.

CENTENNIAL BIOMEDICAL CAMPUS

Anchored by the College of Veterinary Medicine, NC State's 250-acre Centennial Biomedical Campus (CBC) is an extension of Centennial Campus. In partnership with corporate and government entities, the focus of this campus is on biomedical research for both animals and humans.

Helpful Links

NC STATE UNIVERSITY
ncsu.edu

NC STATE VIRTUAL TOUR
visit.ncsu.edu

NC STATE CAMPUS MAP
maps.ncsu.edu


VISITOR PARKING
go.ncsu.edu/visitors

RIDING THE WOLFLINE BUS
go.ncsu.edu/wolfline

UNIVERSITY HOUSING
housing.ncsu.edu

NC STATE DINING
dining.ncsu.edu

Undergraduate Admissions | undergrad-admissions@ncsu.edu
Campus Visits | campusvisits@ncsu.edu

 [@ncstateadmissions](https://www.facebook.com/ncstateadmissions)

  [@applyncstate](https://twitter.com/applyncstate)

OUR CAMPUS

**You'll find
your place on
campus **no
matter what
your major is.****

We have strong roots in our state's capital. As one of the fastest-growing cities in the nation, Raleigh is home to a vibrant and diverse community. Here, you'll find acclaimed culture, a bustling downtown and a thriving job market. It's also a short drive to both the Atlantic Ocean beaches and the Appalachian mountains.

Our university is comprised of three campuses: Main Campus, Centennial Campus and Centennial Biomedical Campus. Each one is unique, full of opportunities and within minutes of each other.



Aerial view of the east side of NC State's Main Campus with Raleigh's downtown skyline in the background



Main Campus

Student life thrives here.



Talley Student Union

Talley Student Union serves as a foundation for student life on campus. Students come together to eat, study, socialize, shop, attend club meetings and watch performances all under one roof.

Talley features plenty of dining options to cater to every craving - nine eateries, a full-service restaurant, food from around the world, the Pavilion food-court, two coffee shops and a convenience store featuring Howling Cow Ice Cream. It's also home to NC State's bookstore, Wolfpack Outfitters.

Talley features our Student Involvement Center which supports more than 600+ campus organizations, including Student Government and the Union Activities Board. Multicultural Student Affairs, GLBT Center and the Women's Center are housed here within the Office of Institutional Equity and Diversity.



Reynolds Coliseum

Reynolds Coliseum

An icon of NC State's central campus, Reynolds Coliseum is home to Wolfpack Women's basketball and volleyball, and wrestling, gymnastics and our ROTC offices.

The NC State Athletics Walk of Fame & History located in the BB&T Grand Hall showcases the successes of NC State Athletics including the 1974 and 1983 men's basketball national championship teams. The BB&T Grand Hall is open to the public Monday - Friday from 8 a.m. - 4 p.m. Hours of access are subject to change due to events.



Memorial Belltower

Memorial Belltower at Henry Square

The Memorial Belltower has stood as a symbol of identity for NC State since 1937. The Belltower is a memorial to NC State students who gave their lives to serve our country in World War I.

If you pass by the Belltower at night you may notice that it is illuminated in red. It is lit for holidays that honor veterans and to celebrate NC State's achievements. The Belltower has become the backdrop for many momentous occasions for the campus community. It is where students gather to celebrate after winning a big game and to take graduation pictures to serve as a reminder of their time at NC State.



D. H. Hill Jr. Library

D. H. Hill Jr. Library and Academic Success Center

Located on Main Campus, Hill Library houses over one million volumes of the Libraries' collection. With plenty of study and collaboration spaces, students have a variety of options to get their work done.

Hill is equipped with a Makerspace, Digital Media Lab and Virtual Reality Lab. A recent renovation was completed to create the Academic Success Center. This space features free academic tutoring, career counseling and academic advising. Also located within Hill is the Office of Undergraduate Research. New and updated library spaces include a visualization studio that provides an immersive, 360-degree projection.



Centennial Campus

Centennial is home to research opportunities and local businesses.



James B. Hunt Jr. Library

Known as the library of the future, Hunt Library provides spaces for both students and researchers to study, collaborate and create.

The library is home to the bookBot - a robotic retrieval system that stores and delivers your book within minutes after you request it. Hunt Library also features nearly 100 reservable study rooms, a game lab, music and media production rooms, and virtual environment rooms. Other features of the library include Makerspace, a space for 3D printing for rapid prototyping of designs, and a cafe so you can get your coffee or Howling Cow ice cream during your study sessions.



Carol Johnson Poole Clubhouse

Golf and Dine

The Lonnie Poole Golf Course and Carol Johnson Poole Clubhouse are public facilities designed to provide the NC State community and golfing public access to a championship golf course playable for all skill levels.

The elegantly appointed clubhouse features a full-service golf shop and indoor training facilities, a full-service restaurant and bar and meeting space for special events. It's location on NC State's Centennial Campus provides one of the best views of the downtown Raleigh skyline.



Park Alumni Center

As the only collegiate golf course in the world designed by the legendary Arnold Palmer, *Golfweek Magazine* has voted the course one of the top 30 college/university golf courses in the world nearly every year since its opening. The course serves as the home course for NC State Men's and Women's Golf teams, as well as a teaching and training facility for turfgrass and stormwater research and our Professional Golf Management Program. For affordable rates and tee times, visit lonniepoolegolfcourse.com.

Park Alumni Center

The Dorothy and Roy Park Alumni Center, built on the southern shore of Centennial Campus' Lake Raleigh is home to the Alumni Association and the State Club restaurant. It is an elegant destination for a business lunch and a prime location for reunions, post-game receptions, parties and seminars.

The building features Italian marble flooring, double curving staircases and a grand reception room with a full wall of windows overlooking the lake.

With more than 20,000 members, the Alumni Association provides opportunities to socialize, network and connect with the university and other alums as well as discounts and travel opportunities. Learn more at alumni.ncsu.edu.

The State Club restaurant is open to the public Monday - Friday from 11 a.m. - 2 p.m. While a membership is not required to dine for lunch or hold an event, State Club members enjoy exclusive dinner and social events. For more information, visit the State Club at thestateclub.org.



Centennial Biomedical Campus

Partner with corporate and government entities and biomedical research.



The Vet School

NC State's College of Veterinary Medicine proudly ranks fourth in the nation and is a driving force in research and training. Conveniently located minutes from Main Campus, students and faculty work side by side with industry and government researchers to address the world's biggest problems in veterinary research. The campus spans 250 acres featuring a working 80-acre farm known as the Teaching Animal Unit to provide on-campus teaching labs for students to gain hands-on learning.

The Randall B. Terry Medical Center, located on NC State's Veterinary Campus, is one of the nation's largest veterinary hospitals. The Center treats more than 35,000 patients each year and furthers the teaching mission of the College of Veterinary Medicine. The Veterinary Hospital also features the Farm and Equine Veterinary Medical Center and Health and Wellness Center. Services include rehabilitation and behavioral medicine and exotic animal medicine service.

Learn more about the College of Veterinary Medicine at cvm.ncsu.edu.



JC Raulston Arboretum

JC Raulston Arboretum

The JC Raulston Arboretum is a nationally acclaimed garden with one of the largest and most diverse collections of landscape plants adapted for landscape use in the Southeast.

The Arboretum is named after J.C. Raulston who arrived at NC State in 1975 to teach and start an arboretum within the Department of Horticultural Science. The Arboretum consists of ten and a half acres and serves as a living laboratory for students and faculty. It is free and open to the public.

Learn more at jcra.ncsu.edu.

Research Triangle Park is the largest research park in the United States.

NC State is an anchor of the Research Triangle region, a renowned destination for high-tech enterprise, providing students easy access to internships and co-ops. Here, you'll study a stone's throw away from some of the nation's leading companies. Home to 300+ businesses, Research Triangle Park (RTP), is the largest research park in the country.

Top companies in RTP:

IBM Corporation, Cisco Systems, GlaxoSmithKline, Fidelity Investments, RTI International, Credit Suisse, Lenovo, NetApp, Biogen and the United States Environmental Protection Agency.





LIFE AT NC STATE

**Your options
to get involved
are limitless.**

Student life thrives across campus and Wolfpack pride is noticeable everywhere you go.

With over 600+ clubs and organizations on campus you'll find a group who shares similar interests to you. If you don't find one you like, you can easily start your own.

NC State has more than 60 intramural and club sports programs and 23 Division 1 varsity teams. Interested in taking your athleticism off the court? Our recreation complexes encompass 430,000 square feet of fitness space featuring a rock climbing wall and an Olympic-sized pool.





Athletics

On the court, the field, the track and the diamond, NC State competes at the highest level.



Nothing unites the Pack like the excellence of our student-athletes.

Since the first football game in 1892, NC State University has competed at the highest level of college athletics. We have won five national championships, including three NCAA championships, countless conference titles and 36 individual national championships. We've also produced Olympic medalists in swimming, as well as 31 individual NCAA and AIAW national champions in a variety of sports.

NC State competes in 23 intercollegiate varsity sports and is a founding member and competitor in the Atlantic Coast Conference (ACC).



Students spend time outside of class cheering on the Wolfpack at Carter-Finley Stadium and PNC Arena. In its 50 years of existence, Carter-Finley Stadium has earned a reputation as one of the most exciting venues in college football. Across the street, PNC Arena hosts our men's basketball team. With 19,700 seats, it is one of the largest college basketball facilities in the nation.

When not cheering on one of our varsity sports, students can take to the field or support other members of the Pack in one of more than 60 intramural club sports.

Learn more about our Wolfpack athletic teams at gopack.com.



Fans cheer as the Wolfpack runs out onto the field at Carter-Finley Stadium



PNC Arena during a Wolfpack men's basketball game



Events

**80,000+
people visit
Hillsborough
Street every
year for this
momentous
event.**

Packapalooza

Packapalooza, one of NC State's biggest annual celebrations, is an all-day block party and street festival held on Hillsborough Street each August.

It concludes Wolfpack Welcome Week and celebrates all new and returning students with food, games, music and activities for the whole family.



Fireworks over the Memorial Belltower at Henry Square during Packapalooza

Learn more about **what NC State has to offer.**

Open House

NC State welcomes thousands of students and their families to visit our campus for our University Open House each October. This is an opportunity to tour campus, meet admissions staff, attend academic program information sessions and connect with the campus community.

Learn more at openhouse.ncsu.edu.



Student ambassadors helping guests during University Open House

NC State makes history with over **\$1.8 million donated.**

Krispy Kreme Challenge

Every February, NC State hosts the annual Krispy Kreme Challenge, a student run charity based race dedicated to supporting the UNC Children's Hospital.

The task? Starting at NC State's Memorial Belltower, participants must run 2.5 miles to the nearest Krispy Kreme, eat a dozen doughnuts, and run 2.5 miles back to the Belltower — all in one hour or less.

Think you're up for the challenge?



Runners preparing for the race



Completing the Challenge



Post-race celebrations

A student-organized fashion show of wearable innovations.

Art2Wear

NC State's very own student-run fashion show fuses the talents of several departments in the College of Design and beyond.

Students experience first-hand what it's like to coordinate and produce an annual fashion show. Drawing in nearly 1,000 attendees every year from the Raleigh community to the design industry, these young designers are challenged to imagine and create wearable art for display on the runway.



A model wearing designs from Externalize by Madeleine Tharrington.



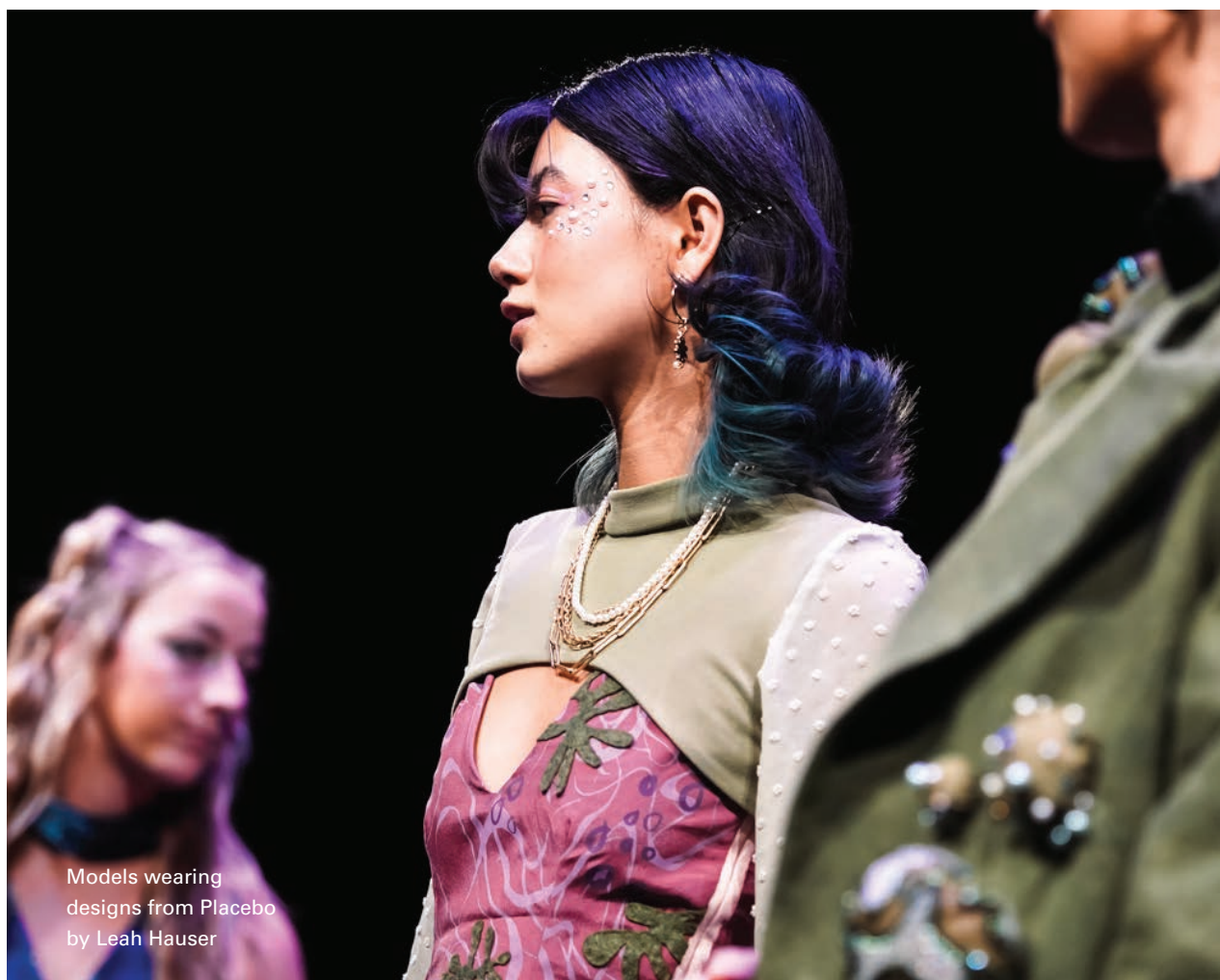
A student works on their design for Art2Wear



Amaya Abraham (right) on stage with her collection, Subliminal Transitions



A piece from Discourse by Renee Harris presented during the A2W studio junior review



Models wearing
designs from Placebo
by Leah Hauser



A model wearing
designs from Patched
by Owen Snape



Campus Directory

Campus Contact Information

NC State University	ncsu.edu
Academic and Student Affairs	dasa.ncsu.edu
African American Cultural Center	diversity.ncsu.edu/aacc
Agricultural Institute	cals.ncsu.edu/agricultural-institute
Arts NC State	arts.ncsu.edu
Athletics	gopack.com
Bookstores	shop.ncsu.edu
Campus Police Department	police.ehps.ncsu.edu
Campus Enterprises	campusenterprises.ncsu.edu
Campus Visits	admissions.ncsu.edu/visit
Career Development Center	careers.dasa.ncsu.edu
Disability Resource Office	dro.dasa.ncsu.edu
Fraternity and Sorority Life	fsl.dasa.ncsu.edu
GLBT Center	diversity.ncsu.edu/glbtc
Leadership and Civic Engagement	leadandengage.dasa.ncsu.edu
Lonnie Poole Golf Course	lonniepoolegolfcourse.com
Multicultural Student Affairs	diversity.ncsu.edu/msa
Music Department	music.dasa.ncsu.edu
New Student Programs	newstudents.dasa.ncsu.edu
Non-Degree Studies	nds.registrar.ncsu.edu
NC State Dining	dining.ncsu.edu
NC State University Libraries	lib.ncsu.edu

Office for Institutional Equity and Diversity	diversity.ncsu.edu
Office of International Services	internationalservices.ncsu.edu
Parents and Families Services	parents.ncsu.edu
Park Scholarships	park.ncsu.edu
Pre-Professional Programs	careers.dasa.ncsu.edu/pre-professional
ROTC Air Force	airforce.dasa.ncsu.edu
ROTC Army	army.dasa.ncsu.edu
ROTC Marine Corps	naval.dasa.ncsu.edu
ROTC Navy	naval.dasa.ncsu.edu
Student Centers	studentcenters.ncsu.edu
Campus Health	healthypack.dasa.ncsu.edu
Student Involvement	studentinvolvement.dasa.ncsu.edu
Student Media	studentmedia.dasa.ncsu.edu
Student Services Center	studentservices.ncsu.edu
Study Abroad	studyabroad.ncsu.edu
Transportation/Parking	transportation.ncsu.edu
Undergraduate Admissions	admissions.ncsu.edu
University Honors Program	honors.dasa.ncsu.edu
University Housing	housing.dasa.ncsu.edu
Veterans Education Benefits	veterans.ncsu.edu/benefits
Wellness and Recreation	wellrec.dasa.ncsu.edu
Women's Center	diversity.ncsu.edu/womens-center

Colleges and Academic Departments

College of Agriculture and Life Sciences	cals.ncsu.edu
College of Design	design.ncsu.edu
College of Education	ced.ncsu.edu
College of Engineering	enr.ncsu.edu
College of Humanities and Social Sciences	chass.ncsu.edu
College of Natural Resources	cnr.ncsu.edu
College of Sciences	sciences.ncsu.edu
College of Veterinary Medicine	cvm.ncsu.edu
Poole College of Management	poole.ncsu.edu
The Graduate School	grad.ncsu.edu
University College (Exploratory Studies)	universitycollege.dasa.ncsu.edu
Wilson College of Textiles	textiles.ncsu.edu

Social Media

NC State University



Undergraduate Admissions



Continue your visit on our virtual tour at **visit.ncsu.edu.**

FEATURES

- I/40 off Gorman Street (Exit 295)
- Minutes from downtown Raleigh
- Indoor heated pool and spa
- Complimentary WIFI and Parking
- In-room Keurig coffee maker, Microwave and Fridge
- Onsite Fitness Center
- Complimentary Express Start Hot Breakfast Bar



**Ask About Our NC State
UNIVERSITY RATE!**



AN IHG® HOTEL

**Holiday Inn Express & Suites
near NC State University SW**

3741 Thistledown Drive

Raleigh, NC 27606

Phone: (919) 854-0001

Email: gormanexpress@gmail.com



**CLOSE TO
NC STATE!**

TOWNEPLACE SUITES®

BY MARRIOTT

RALEIGH - UNIVERSITY AREA

State-of-the-Art Fitness Center • Full Kitchenette • Outdoor Patio Area with Firepits and Grills • Complimentary Breakfast Buffet • In A Pinch Market • Something Borrowed Program • Coming Soon: Onsite Bar/Restaurant









3771 Thistledown Drive | Raleigh, NC 27606 | P: 984-300-1410 | F: 984-300-1420 | Special Rate Code: **MNCA** or **XNUX**



Essentially Raleigh

HEY RALEIGH,
SHOP WITH US!

-  **Holly Park** Trader Joe's, Ulta, DSW
-  **Market at Colonnade** Whole Foods, Fleet Feet Sports, Panera Bread
-  **Midtown East** Wegman's, DryBar, Crumbl Cookies, Torchy's Tacos
-  **Village District** Goodnights Comedy Club, Sephora, Chick Fil A
-  **Sutton Square** The Fresh Market, Rise Biscuits & Donuts, Metro Diner
-  **Ridgewood** Whole Foods, Orvis

From fresh groceries to daily needs, and spa days to dinner dates, we have a shopping spot near you.





Scan the QR for a detailed map of our locations:

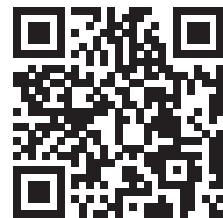




COME CHEER ON THE PACK WITH US

Only 4 Miles from NC State Campus

-  FREE BREAKFAST, PARKING, WI-FI
-  OVERSIZE GUEST ROOMS
-  EXTENDED FITNESS CENTER
-  INDOOR POOL



SPECIAL RATE
for NC State Parents and Families



WINGATE STATE ARENA RALEIGH/CARY
6115 Corporate Ridge Road
Raleigh, NC 27607
(919) 809-8660
www.ncraleighhotel.com

FOUR MILES FROM NC STATE

Brand New

Home2 Suites

by Hilton Raleigh State Arena

Special rate for NC State Parents and Families

ALL-SUITE HOTEL WITH 110 ROOMS



Free hot breakfast



Free parking



Free Wifi



Non-smoking rooms



Outdoor pool



Fitness center



Pet-friendly rooms



Business center



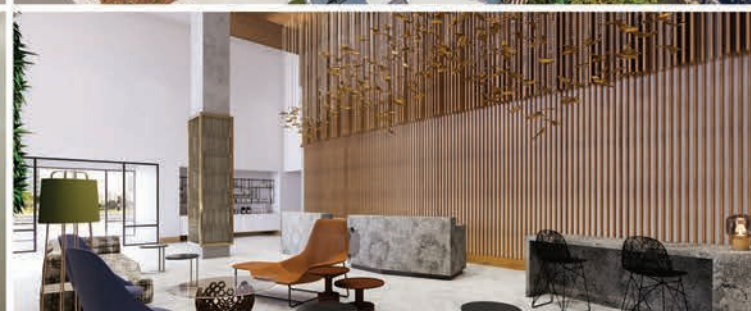
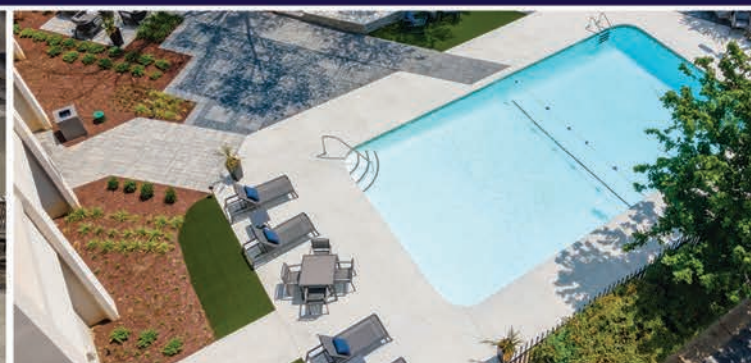
Meeting Rooms



6825 Chapel Hill Road
Raleigh, NC 27607
(919) 863-9330

www.raleighstatearena.home2suites.com





ASK ABOUT OUR NC STATE DISCOUNT

Westin Raleigh Durham Airport: 919.224.1400

DoubleTree Raleigh Midtown: 919.872.3500

Courtyard Cary Crossroads: 919.277.9036

SpringHill Suites Raleigh-Cary: 919.977.7244

Fairfield Raleigh-Cary: 919.301.8467

Best Western Plus Cary NC State: 919.481.1200